

# NetClock v4.x

(For Windows 95 Only)

**Copyright (c) 1996  
David W. Yutzy  
All Rights Reserved**

## **Table of Contents**

**What can NetClock do for me?**

**How do I install and setup NetClock?**

**NetClock is installed, now what?**

**How can I register NetClock?**

**Something went wrong! Heeeeeelp!**

**What has been fixed?**

**Legal stuf....Ack?**

**Thank you for using NetClock!**

# What can NetClock do for me?

## Description

Netclock is an internet client that allows users who access Internet Service Providers (ISP) to keep track of their internet time. Often many ISP's only give users 10-??? hours free per month for a flat rate. Then, after these "free hours" have expired, an hourly rate is charged.

## Exact Features

- Using Winsock, detects when you have connected to your server and when you have disconnected. (Most people just put NetClock in their StartUp folder/group. NetClock starts minimized so you can run it and forget that it is even there!)
- Tracks the following times:
  - Duration of the Current Call.
  - Duration of all the calls made Today.
  - Duration of all the calls made this billing cycle (see below).
  - Duration of all the calls made since started to use NetClock.
- Day of the billing cycle can be changed. (Set to the day your provider resets your "free hours" to zero).
- On the day of the billing cycle, a log entry is written to an ASCII text file with your total time that billing cycle, number of calls, any charges past your free hours that you accrued, and the charge for each additional hour.
- Price for each hour past your Free Hours. This can be of any currency to allow for international use.
- Number of calls made this billing cycle.
- Your registration is good for all future updates!

# How do I install and setup NetClock?

## I got the .ZIP file, now what?

- UnZIP the files into whatever directory you wish. NetClock doesn't care where it resides.

## Okay, files are unZIP'd, how do I run NetClock?

You can do this about any way you want. But here are the most common uses of NetClock:

- Create a Short-Cut of NetClock in the StartUp folder. This will start NetClock as soon as Win 95 is booted. NetClock will minimize itself to the taskbar automatically. It will start/stop when you connect/disconnect from your server.

Be sure to exit BEFORE you shutdown so that your times are saved!

- Put a short-cut of NetClock on your desktop and click it as you log-in to your server, then exit it when you disconnect.

## Did I miss something?

Nope. NetClock is that easy to use! Enjoy!

# How can I register NetClock?

## Shareware Version

The shareware version of NetClock has a limitation of 1 hour on-line time or 30 calls, whichever occurs first. After that you MUST register NetClock. All of the time displays will disappear and a message "Please Register NetClock" will appear and remain until you register NetClock.

## Registering NetClock

To register NetClock, simply link from the NetClock web page to Regnet or go to the following:

URL:<http://www.xmission.com/~wintrnx/regnet>

NetClock's index number is 90. The registration fee is \$15.50 and you can bill this directly to your Visa, Mastercard, or American Express. I will be notified within 24 hours and will send you a registration Name and Sequence that will remove the Shareware time/call limitation.

If sending your credit card information over the internet gives you the same feeling as raking finger nails over a chalk board, then you can call RegNet directly at:

Toll Free: 1-800-999-2734

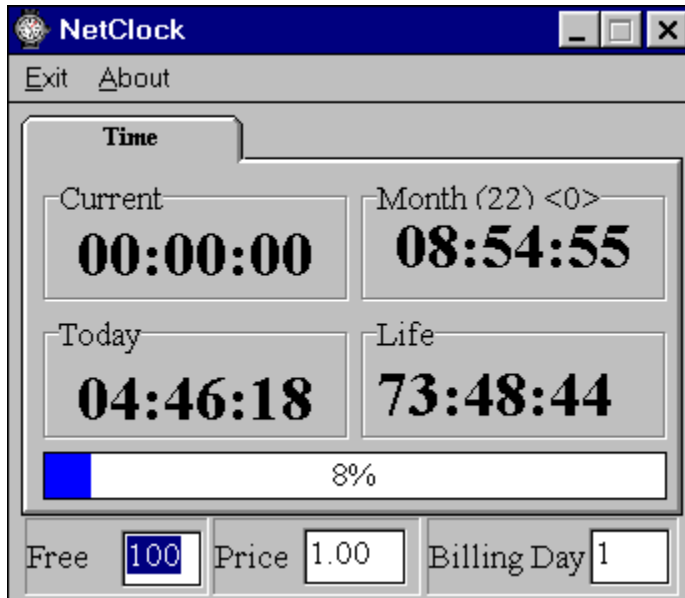
International: (801) 355-5110

## Updates, Upgrades, and Patches

Once you register NetClock, you are entitled to all upgrades, updates, or bug fixes free of charge. Your Name and Sequence will always be good, today and tomorrow!

# NetClock is installed, now what?

Please use the following picture to find out all the features of NetClock and what they do. Simply move the mouse cursor over the image and a small hand will appear over the item that has further information. Please be aware that the screen is small and some features are VERY close to each other.



Quits NetClock and saves all information to ...\netclock.ini

Displays another screen with information about the Author, Technical Support, and who NetClock is registered to. If the version is unregistered, no Name or Sequence will be displayed.

Displays the duration of the Current call. Syntax is HH:MM:SS.

This value is only reset if you exit, then restart NetClock.

When NetClock is minimized, the current call time will be displayed in the TaskBar button!



Displays the duration for all calls made during this billing cycle. Syntax is HH:MM:SS

Indicates how many calls have been made this billing cycle.

Displays how many charges you have accumulated this billing cycle. The formula for calculating charges is:  $(\text{Month} - \text{FreeHours}) * \text{Price}$ . You will only accumulate charges AFTER your free hours has been exceeded.

Displays how long you have been connected today. This value is reset the first time NetClock is run that day.

This value displays how long you have been on the internet since you started using NetClock! Syntax is HH:MM:SS

The gauge or status bar simply indicates graphically how much of your free hours you have used this billing cycle. When NetClock is minimized, a percentage value will be displayed in the Taskbar button!

Indicates the number of free hours allowed by your service provider this billing cycle. Simply type in the number allowed and press ENTER. This will immediately update the screen's charges and status bar percentage. The default value is 100 hours!

Type-in the price or cost for each additional hour past your free hours value. The default value is 1.00 per hour. No currency sign is used so that any currency format can be used.



Sets the day each month when NetClock will reset the Month values to zero (00:00:00) and write the billing cycle's log entry to ..\netclock.log. The default value is the 1st of each month.

# Something went wrong! Heeeeeelp!

## What to do?

I take EVERY bug report, suggestion or comment VERY seriously. If a bug does exist it is eradicated immediately and a patch posted to the web page. Everyone is notified when a patch is available.

When something unexpected happens, please submit the following information to me via e-mail and I will work the problem. No phone support will be given. Also, only registered users get continued e-mail support. However, if you are trying NetClock for the first time and cannot get it to work, I will try to guide you through the process, that's it.

- What happened that was so unexpected?
- What error message was displayed (if any) when the error occurred?
- What were you doing at the time the error occurred?
- What operating system are you using (Win 3.x or Win 95/NT)?
- What dial-up software are you using (Win 95 TCP/IP, Trumpet Winsock, RoboDun, etc...)?
- What type and speed of modem do you have?

## Where can I contact you, Dave?

I can be reached at:

Internet: [dyutzy@terminus.com](mailto:dyutzy@terminus.com)  
Web Page: <http://www.terminus.com/~dyutzy/netclock.html>

No mail or phone support is given, sorry.

## How long does it take for support?

Ask anyone who has asked for support and they'll tell you it's almost immediate. Yes, that fast. I check my mail many times a day and if I get a message from any NetClock user, I respond immediately.

Now, I do take vacations and time off so don't hold me to this...

# What has been fixed?

1/4/1996 - v4.2 (Win 95 only)

=====

- ~Fixed billing error that GPF'd when .INI not exist.
- ~Removed ASCII files and created this help file for all information about NetClock.
- ~Minor code modifications, shrank code size to 220k (reduced almost 40k more!)

12/27/1995 - v4.1 (Win 95 only)

=====

- ~Interface slightly adjusted per user requests.
- ~Uses Winsock to start/stop timer. Dead-on accuracy.
- ~Removed COM port detection.
- ~Added, NetClock starts Minimized (Thanks Tom Hall)
- ~Removed left-right click settings adjustment.
- ~Added text boxes for settings.
- ~Code tighter, .EXE much smaller than before (40k smaller!)
- ~Removed "Exit" and "About" buttons, replaced by Menus (less screen real-estate used)

12/13/1995 - v4.0

=====

- ~Smoothed interface. Made options configuration more logical and friendly.
- Cleaned-up main time window.
- ~Made .LOG entires more readable, logical.
- ~Timer more accurate (was within 30 seconds, now less than 10 seconds).
- ~COM port monitoring more accurate.

12/08/1995 - v3.1

=====

- ~Fixed billing cycle error, multiple entry on same day of billing cycle.
- ~Added logging feature after each billing cycle.
- ~Added % of free hours used to minimized label (Thanks Tom Hall)
- ~Added Current call timer to minimized label (Thanks Tom Hall)
- ~Added confirmation when Clearing timer values.
- ~Removes Registration tab when registered.

12/05/1995 - v3.0

=====

- ~Fixed serious code flaw with .INI file (when first starting).

11/28/1995 - v3.0

=====

- ~Added usage gauge.
- ~Removed Time/Hours Tab and combined with first tab
- ~Added easier interface, just left-click to subtract, right-click to add

11/27/1995 - v2.5

=====

- ~Fixed bug when shareware time exceeded.
- ~Fixed bug when used with Win 3.x that fonts were larger.

11/10/1995 - v2.0

=====

~Totally redesigned interface (entirely!)

~Added charges tracking.

~Removed "Nag" message and set registration limit to 1 hour (Life) or 30 calls.

11/7/1995 - v1.5

=====

~Removed Pause and Exit button.

~Added autodetection.

~Added COM menu to select COM port.

~Fixed font problem with registration.

~Modified About screen, helps make .EXE smaller.

11/1/1995 - V1.0

=====

NetClock released to public.

# Legal Stuff...Ack?

NETCLOCK (TM)

Copyright (C), 1995 David W. Yutzy, ALL RIGHTS RESERVED

## LIMITED WARRANTY AND REMEDIES

THE PROGRAM IS PROVIDED "AS IS" WITHOUT WARRANTY OF ANY KIND, EITHER EXPRESS OR IMPLIED, INCLUDING, BUT NOT LIMITED TO WARRANTIES OF MERCHANTABILITY OR FITNESS FOR A PARTICULAR PURPOSE. IN NO EVENT WILL THE AUTHOR BE LIABLE TO YOU FOR ANY DAMAGES, INCLUDING INCIDENTAL OR CONSEQUENTIAL DAMAGES, ARISING OUT OF THE USE OF THE PROGRAM, EVEN IF ADVISED OF THE POSSIBILITY OF SUCH DAMAGES.

YOU ACKNOWLEDGE THAT YOU HAVE READ THIS LICENSE, UNDERSTAND IT AND AGREE TO BE BOUND BY ITS TERMS AS THE COMPLETE AND EXCLUSIVE STATEMENT OF THE AGREEMENT BETWEEN US, SUPERSEDING ANY PROPOSAL OR PRIOR AGREEMENT, ORAL OR WRITTEN, AND ANY OTHER COMMUNICATIONS BETWEEN US RELATING TO THE SUBJECT MATTER OF THIS LICENSE.

NetClock is a "shareware program" and is provided at no charge to the user for evaluation. Feel free to share it with your friends, but please do not give it away altered or as part of another system. The essence of shareware software is to provide personal computer users with quality software without high prices, and yet to provide incentive for programmers to continue to develop new products.

If you find this program useful and find that you are using NetClock and continue to use it after a reasonable trial period, you must make a registration payment. This registration fee will license one copy for use on any one computer at any one time. All users will receive a copy of the latest release of NetClock when they register, and free technical support for a limited period.

You must treat this software just like a book. For example, this software may be used by any number of people and may be freely moved from one computer location to another, as long as there is no possibility of it being used at more than one location at a time. Just as a book cannot be read by two people at the same time.

Commercial users of NetClock must register and pay for their copies of NetClock within 30 days of first use or their license is withdrawn. Site License arrangements may be made by contacting David W. Yutzy ([dyutzy@terminus.com](mailto:dyutzy@terminus.com)).

Anyone distributing NetClock for any kind of remuneration must first contact David W. Yutzy at the address below for authorization. This authorization will be automatically granted to distributors recognized by the (ASP) as adhering to its guidelines for shareware distributors, and such distributors may begin offering NetClock immediately. (However David W. Yutzy must still be advised so that the distributor can be kept up-to-date with the latest version of NetClock).

You are encouraged to pass a copy of NetClock along to your friends for evaluation, but you must include all files in the original distribution. Please encourage them to register their copy if they find that they make use of it.

## DEFINITION OF SHAREWARE

Shareware distribution gives users a chance to try software before buying it. If you try a Shareware program and continue using it, you are expected to register. Individual programs differ on details -- some request registration while others require it, some specify a maximum trial period. With registration, you get anything from the simple right to continue using the software to an updated program with printed manual.

Copyright laws apply to both Shareware and commercial software, and the copyright holder retains all rights, with a few specific exceptions as stated below. Shareware authors are accomplished programmers, just like commercial authors, and the programs are of comparable quality. (In both cases, there are good programs and bad ones!) The main difference is in the method of distribution. The author specifically grants the right to copy and distribute the software, either to all and sundry or to a specific group. For example, some authors require written permission before a commercial disk vendor may copy their Shareware.

Shareware is a distribution method, not a type of software. You should find software that suits your needs and pocketbook, whether it's commercial or Shareware. The Shareware system makes fitting your needs easier, because you can try before you buy. And because the overhead is low, prices are low also. Shareware has the ultimate money-back guarantee:- if you don't use the product, you don't pay for it.

David W. Yutzy

Internet: [dyutzy@terminus.com](mailto:dyutzy@terminus.com)

Web Page: <http://www.terminus.com/~dyutzy>



